



NEWSLETTER

April 2015

In This Issue

- For Our Prayers
- Faith Becomes Sight
- Donations

Quick Links

VISIT THE WEBSITE

Note the blogs on the website from Lynn Kennedy.

DON'T MISS IT!

shatteringdarkness.org

FAITH BECOMES SIGHT

In this issue Lynn shares what God has been doing to sustain the future of His work through this ministry in West Africa. Praise His Holy Name!

Beloved Partners in Ministry, thank you for being patient as you waited for this over-due update! Whenever I write, whether for the BLOG, the SD HOMEPAGE or our e-newsletters, the words and the timing must be God-ordained and Holy Spirit-breathed. I have been still before our Lord wanting/needing His word...and during prayer time this morning, He moved.

It is with much joy and praise to our Lord to announce another "vision" becoming sight! Nearly 10 years in the praying and seeking. And as so often happens, our Lord has answered the prayer by using His children as vessels and conduits of blessing!

- A widow. Literally sold timber from her farm property. And sent 50% of the proceeds to be the "seed" money for our S.E.E.D. Project! (Sustainable. Elevage (animal husbandry). Education. Development)
- Co-incident (albeit known to our Lord and NOT to the believers involved) a matching gift from folks at FBC Orlando and FBC Princeton, Kentucky!

- Followed closely by another matching gift from friends and partners in North Dakota

And the "Faith-Farm" becomes sight! This morning, as I am typing this, we have purchased nearly 15 acres of land near a year-round source of water! We have the funds in-hand to clear the land, dig 3 shallow water wells, purchase the water pumps, haul rich soil to the 'Farm' and plant 100 mango trees! The funds are also sufficient to place a chain-link fence around the property as well as build a small 'Manager's house' on-site!

Phase II will include adding a garden (vegetables and fruit). Phase III will include raising goats, sheep and chickens. PHASE IV will include raising cattle.

All of these endeavors have one goal. Sustaining and advancing the ministry of Shattering Darkness, assuring the continuance of the Gospel, forming leaders and making disciples within our various churches.

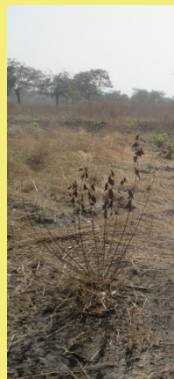
Continued partnership with our American and Canadian partners will allow expansion of our LIGHTHOUSE Christian school, construction of additional churches and providing Higher Education for our Pastors and Teachers. Our joint-ministry partnership will continue to provide food for the FeedHisChildren arm of our ministry. And, yes, indeed our women will continue learning to read and write and teach our Lord's word! We will work together to see our Lord's truths proclaimed and His Kingdom expanded!

"Now He who supplies seed to the sower and bread for food, will supply and multiply your seed for sowing and increase the harvest of your righteousness; you will be enriched in every way for all generosity, which produces thanksgiving to God through us. For the ministry of this service is not only providing for the saints, but is also overflowing in many acts of thanksgiving to God." 2 Corinthians 9:10-12

Thank you! Lynn



The S.E.E.D Project



God's Land



The Faith - Farm



Romar checking the land



Great Land!

If you have enjoyed and been touched by our e-newsletters we have a favor to ask. Please pass along the newsletter to friends and co-workers. We are attempting to expand our contact base and each of you reading this month's edition know many people we never meet this side of heaven. To receive this bi-monthly e-newsletter simply send your email address to : nbkort@gmail.com

FOR OUR PRAISE

- 1. God's supernatural Provision.**
- 2. God choosing to use people to expand His Kingdom and accomplish His will.**
- 3. God's ultimate gift to us ... His Son. Our Savior. Jesus!**
- 4. The opening of our Pastor Training Institute!**

FOR OUR PRAYERS

- 1. Victory over severe oppression and threatened violence in the village of Naro.**
- 2. Complete deliverance of oppression and demonic activity for "Valentine".**
- 3. A good rainy season.**
- 4. Safety as Lynn travels and speaks in the U.S. April through August.**
- 5. Strength and protection for Patrice, Celine and leaders as they direct the ministry.**

How to Financially Partner With Shattering Darkness Ministries

To send a tax-deductible, charitable contribution using Pay Pal or by Credit Card, click [here](#) and select the [donate button on our website](#) or mail your contribution to:

Shattering Darkness
c/o Karen Bassett
PO Box 71844
Newnan, GA 30271

If you have questions or concerns, please contact Karen Bassett by phone at (678) 378-6004 or contact Karen by e-mail at Karenb@newhopebc.org.

You may also contribute by selecting Shattering Darkness Ministries as your ministry to benefit from your purchases on Amazon Smile. A small percentage of the value of your purchases are forwarded to Shattering Darkness.

"When you make a financial contribution to the work of Jesus Christ via Shattering Darkness Ministries, you are impacting a lost world in the areas of evangelism, discipleship, church planting, radio broadcasts, Jesus Film production, building schools and churches, treating thousands of sick and ministering to widows and orphans. We cannot place a dollar amount value on this. Can you?"

Shattering Darkness, PO Box 71844, Newnan, GA 30271